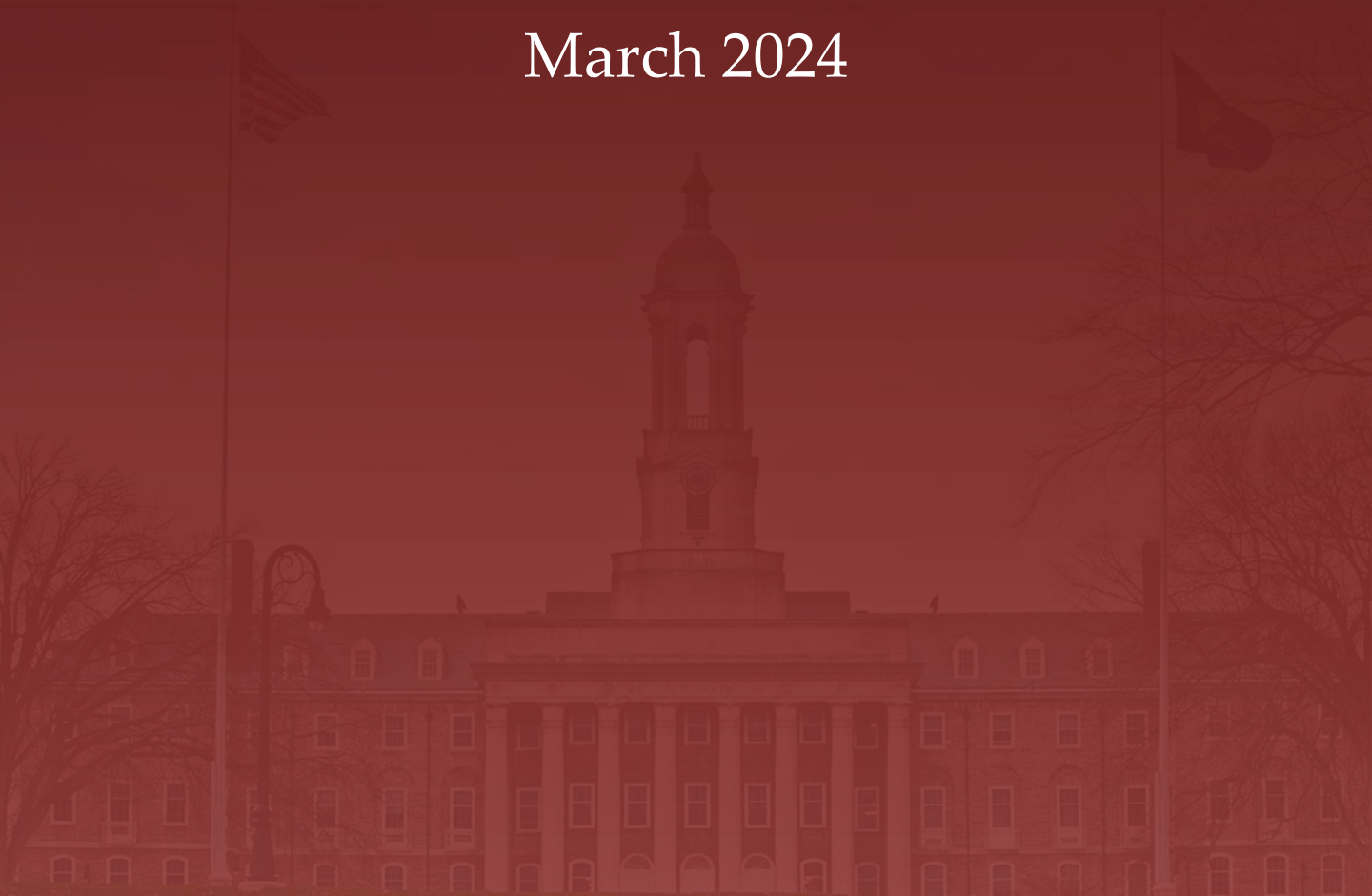


# Leveraged Lion Capital Monthly Report

March 2024



## LLC Updates

Leveraged Lion Capital had an extremely eventful March. After returning from the Wall Street Trip and Spring Break, portfolio managers wasted no time and immediately got to work. This was a month of organizational updates, out-of-class experiences, and recruiting advancements.

Portfolio Managers engaged in portfolio research reports and gained insight into data surrounding the portfolio. Lead Analysts received guidance and had opportunities for Q&A regarding which debt instruments should be invested in to uphold our strict portfolio standards and objectives. Managers also participated in educational sessions on leveraged buyouts and relative valuation to better prepare for their solo presentations.

A significant portion of membership time was dedicated to preparing solo pitch presentations for the end of the semester. The class also engaged in discussions about recruiting and interviewing in a class-wide session, including a Q&A, to best prepare themselves for the rigorous interview process ahead.

The organization also participated in multiple intramural sporting events. Leveraged Lions competed in soccer and spikeball activities throughout the semester, cheered on by fellow members. Lastly, the organization welcomed 11 New Associates, who have since commenced an in-depth training process.

## Fall 2024 New Associate Class



## Pages 1 & 2

- Organization Developments  
- Luke Zoll
- Alumni Spotlight  
- Chris Peckyno

## Page 3

- Credit Markets News, CIO Commentary, & Credit Statistics  
- Peyton Brezski

## Pages 4 & 5

- Sector Summaries

## Page 6

- Portfolio & Credit Analysis  
- Peyton Brezski

## Page 7

- Organizational Overview

*Thank You to Our Sponsors:*



**BANK OF AMERICA**



**S&P Global**



Chris Peckyno studied Finance at Penn State from 2016 to 2019. He served as the Director of Equity Analysis during the 2018 calendar year. For the summer of 2018, he interned at Morgan Stanley as an Institutional Equity Sales and Trading Analyst, where he returned full-time. Chris just began the next chapter of his career, joining Squarepoint Capital's investment and corporate team. Squarepoint, an ~\$80 bn quantitative hedge fund, is renowned for its innovative approach to investing across various asset classes, including equity, fixed income, privates, venture capital, and real estate.

**Contact Information:**

**Email:** [chris.peckyno@squarepoint-capital.com](mailto:chris.peckyno@squarepoint-capital.com)

**Phone:** 302.547.1183

## Alumni Spotlight: Chris Peckyno '19

### *1. When were you a member of Leveraged Lion Capital and what positions did you hold?*

I became a member of LLC in the Spring of 2018, assuming the role of Director of Equity Analysis. Recognizing the importance of a comprehensive market outlook, I focused on enhancing our equity analysis capabilities by conducting market interviews, performing equity valuation analysis, and delivering quality weekly reports. Over two semesters, I dedicated myself to building out this role, developing strong internal fundamental equity knowledge, and contributing to the organization's growth and success.

### *2. What did Leveraged Lion Capital mean to you when you were on campus?*

Leveraged Lion Capital was not just an organization for me—it was a transformative experience that shaped both my professional and personal journey. Due to the nature of my role in LLC, the organization instilled in me an entrepreneurial attitude, teaching me to take ownership of every project and initiative. I developed a very entrepreneurial attitude and truly owned every piece of work that I produced. This mindset seamlessly transitioned into my roles at Morgan Stanley and Squarepoint, where I have approached my work with the same level of dedication and ownership.

Beyond the professional growth, LLC provided me with a tight-knit community of like-minded individuals—a community that has become a source of lifelong friendships and unyielding support. It's where I found my future NYC roommates, connected with numerous industry alumni, and, most importantly, met Annie, my now fiancée.

### *3. What advice do you have for members of Leveraged Lion Capital who are currently recruiting for internships?*

My advice is simple: Be yourself. Authenticity is key in every aspect of the recruiting journey, from networking coffee chats to Superday interviews. Remember, everyone has their own unique personality, strengths, and experiences, so embrace what makes you different. Differentiation is key to standing out, so highlight your strengths and pitch yourself convincingly. Practice your 'tell me about yourself' endlessly and relentlessly, ensuring that your passions shine through in your voice and mannerisms. Find your authentic self, emphasize what makes you passionate, and develop a networking strategy that allows it to take center stage throughout your recruiting journey.

### CIO Commentary

For the month of March 2024, Leveraged Lion Capital's leveraged loan portfolio returned 0.97% nominally, an outperformance to the LSTA 100 Index of 0.51%. Leveraged Lion Capital's high yield bond portfolio returned 0.34% nominally, an underperformance to the HY Index of 0.86%. Bond underperformance reflects poor price action. The portfolio has outperformed both benchmarks YTD.

Currently, Leveraged Lion Capital holds 19 bonds and 12 loans, with S&P credit ratings ranging from CCC to BBB- and B to BB+, respectively.

The REGAL-FIG Sector maintains the highest weighted-average yield at 10.30% with a portfolio of 3 loans, and the Materials Sector has the lowest weighted-average yield holding 3 bonds and a loan.

### Leveraged Loan & HY Bond News

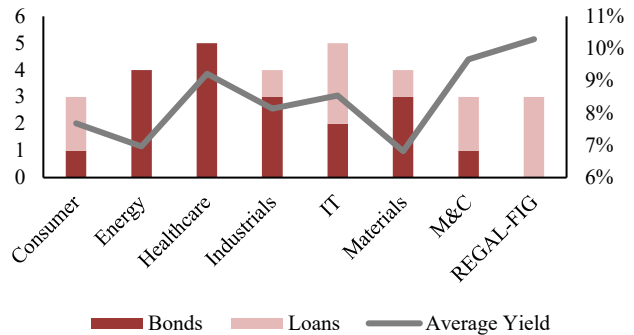
HY new issuance kept up the strong pace in March, pricing a total of \$30.50 bn. Q1 issuance volume in 2024 was roughly double that of Q1 in 2022 and 2023. The cost of borrowing increased slightly in March with the average new-issue coupon rate at 7.84%, still well below the 2023 average of 8.62%. Loan issuance was \$35.00 bn in March with M&A activity accounting for a greater share of HY and loan issuance. Eight issuers defaulted, and the LL TTM default rate rose 10 bps to 3.80% while the HY TTM default rate stayed at 3.04% in March.

### Yield Compression

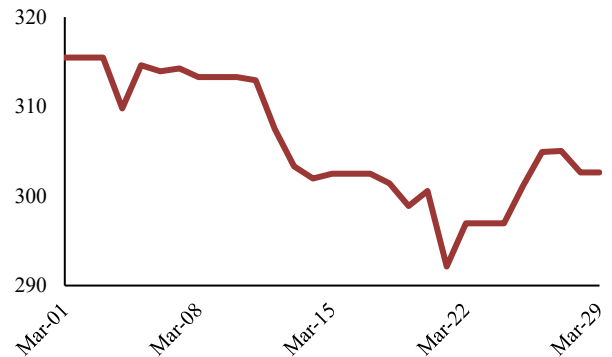
The risk on sentiment continued in March as BBBs tightened most in IG and CCCs tightened most in HY. The S&P, Dow, and Nasdaq indices all rose. Treasury yields dropped minimally following the selloff in February. Hot NFP concerns were eased by downward revisions and rising unemployment. CPI came in above consensus, but PCE was below.

Data and charts used in the March CIO Commentary (page 3) were directly retrieved from Bloomberg for educational purposes only. Data and charts for the Monthly Charts and Portfolio Analytics Report (located on page 7) were directly retrieved from Bloomberg, the LSTA, and S&P Global for educational purposes only. Leveraged Lion Capital is not associated with any of the aforementioned organizations and does not take credit for data and charts used in this report. No copyright infringement intended.

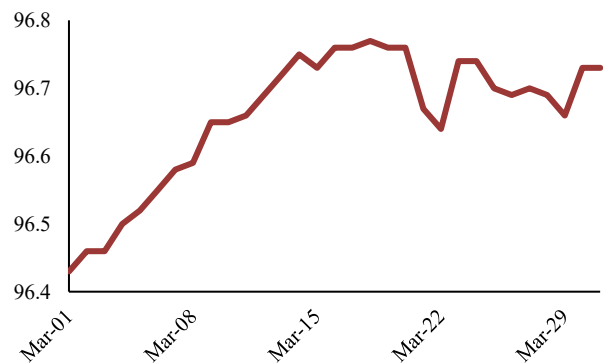
### LLC Portfolio Distribution



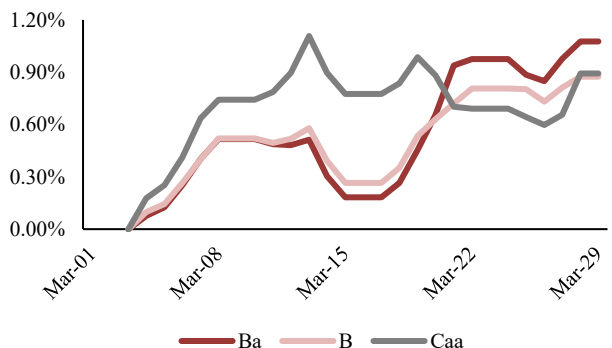
### BBHY Index OAS (bps)



### LSTA 100 Index



### HY Bond Index Total Return by Rating



## Sector Summaries

**Consumer & Retail***Lead Analyst: Madi Hunter*

Consumer and Retail loans returned 0.76% nominally this month and bonds returned 1.33% nominally. The Sector's best performing holding this month was Energizer's 2029 Senior Unsecured Bond traded up 91.8 bps. Energizer continues to work towards lower net leverage in 2024 and expects operating efficiency to increase battery manufacturing and distribution. The Sector's worst performing holding this month was Dave and Buster's 2029 TLB, trading flat. Dave and Buster's just finished a successful spring break promotion that offers deals on food and games and is targeted at college-age students. The sector plans to continue to monitor discretionary spending, especially moving into Q2, consumer sentiment, and move out of Energizer's 2029 Senior Unsecured Bond.

**Energy & Utilities***Lead Analyst: Noah Simone-Dobin*

Energy returned 0.79% nominally this month. The Sector's best performing holding this month was Martin Midstream's 2028 2nd Lien Secured Notes, trading up 119.8 bps. The company beat its full-year 2023 adjusted EBITDA guidance by \$2.50 mm and also reached its leverage target of 3.75x at the tail end of 2023. The Sector's worst performing holding this month was Range Resources' 2030 Senior Unsecured Notes, trading down 38.0 bps. The company recently declared a \$0.08 per share quarterly dividend. The Sector will be monitoring market sentiment regarding oil prices, the supply and demand dynamic between OPEC and Russia's output cuts, and the record production from the United States.

**Healthcare***Lead Analyst: Jayden Golden*

Healthcare returned 0.23% nominally this month. The Sector's best performing holding this month was Embecta's 2030 1st Lien Secured Bond, trading up 180.6 bps. The company recently participated in ABSI's 11th annual MedTech conference. The Sector's worst performing holding this month was ModivCare's 2029 Senior Unsecured Bond trading down 185.2 bps. The company's CFR was recently downgraded by Moody's from B2 to B3. This happened among concerns with the company's liquidity caused by delays in contract payouts. The sector will be monitoring the MGMA Focus Financial Conference this month, as trends in patient care directly affect Pediatrix and ModivCare.

**Industrials***Lead Analyst: Dean Allen*

Industrials loans returned 0.97% nominally this month and bonds returned 0.38% nominally. The Sector's best performing holding this month was Enpro's 2026 Senior Unsecured Bond, trading up 73.3 bps. Enpro is involved in the manufacturing of semiconductors and has been performing well as they released great 2023 earnings in late February. The Sector's worst performing holding this month was Danaos' 2028 Senior Unsecured Bond trading down 67.2 bps. Danaos has had recent struggles due to supply chain issues in the containership industry causing them to perform lower this month. Overall, the Industrials Sector is happy with this month's performance and excited as they are looking to move into IHS Holdings 2027 Senior Unsecured Notes.

# Sector Summaries

## Information Technology

*Lead Analyst: Sid Sharma*

Information Technology loans returned 0.87% nominally this month and bonds returned -0.63% nominally. The Sector's best performing holding this month was Playtika's 2028 TLB, trading up 25.0 bps. The company recently beat a class-action lawsuit over alleged misinformation during its 2021 IPO. The Sector's worst performing holding this month was Consensus Cloud Solution's 2028 Senior Unsecured Bond, trading down 243.3 bps. Near-term macro headwinds in the healthcare market have weighed on the company's performance. The sector will monitor loan spread adjustments within the sector, as many high-yield companies are refinancing leveraged loans.

## Materials

*Lead Analyst: Alex Kornblatt*

Materials Sector loans returned 0.90% nominally this month and bonds returned 0.66% nominally. The Sector's best-performing holding this month was Cleveland Cliffs' 2029 Senior Unsecured Bond, trading up 84.1 bps. Cleveland-Cliffs announced price increases for hot-rolled, cold-rolled, and coated steel products. The Sector's worst-performing holding this month was U.S. Steel's 2029 Senior Unsecured Bond, trading down 66.6 bps. The Materials sector will continue to monitor the status of this bond as Biden met with Japan's prime minister on April 10th over differences concerning the U.S. Steel and Nippon Steel deal.

## Media & Communications

*Lead Analyst: Jakub Dingo*

Media & Communications loans returned 1.46% nominally this month and bonds returned -0.17% nominally. The Sector's best performing holding this month was Magnite's 2030 TLB, trading up 139.4 bps. The company's equity investors have priced in concerns around Disney+ tying in their digital advertisements with connected TV. The Sector's worst performing holding this month was AMC's 2027 Senior Secured Bond, trading down 121.0 bps. Adam Aron, the company's CEO released a statement saying that early 2024 will be a "slog to wade through," citing concerns about top-line performance. Comcast, one of the largest companies in the sector, has reportedly sold \$1.20 bn in ads for the upcoming Paris Olympics. This could set a trend for cable companies across the industry as we approach the summer.

## REGAL-FIG

*Lead Analyst: Ben Petrulis*

REGAL-FIG returned 0.85% nominally this month. The Sector's best performing holding this month was MoneyGram International's 2030 TLB trading up 50.8 bps. MGI has received the award for Top Workplaces USA, demonstrating the strong culture among employees at the company. The Sector's worst performing holding this month was Virtu Financial's 2029 TLB trading down 12.5 bps. Virtu Financial's Q1 earnings are approaching in April with forecasts estimating EPS at \$0.46 compared to \$0.62 in 1Q23. One trend the REGAL-FIG sector plans to monitor is the growing appetite from luxury brands to purchase the underlying real estate assets in which they operate to avoid high rental expenses, resulting in these companies spending over \$9.00 bn on real estate since the beginning of 2023.

# Portfolio Analysis

CURRENT HOLDINGS (as of 3/28/24)

Company Name	Sector	Security	Maturity	Coupon	Buy-In Price	Buy-In Amount	Opening Price <sup>1</sup>	Closing Price	Facility Rating <sup>2</sup>	Price Return	Total Return
Enzigzer	Consumer	Bond	3/31/2029	4.375%	96.312	\$6,000.00	88.486	89.298	B2/B	91.8 bps	133.0 bps
Dave & Buster's	Consumer	Loan	6/29/2029	8.579%	100.375	\$3,999.00	100.000	100.000	B1/B	-	71.5 bps
SeaWorld Entertainment	Consumer	Loan	8/25/2028	7.943%	100.625	\$6,000.00	99.875	100.000	Ba2/BB	12.5 bps	78.8 bps
SM Energy	Energy	Bond	9/15/2026	6.750%	98.742	\$2,000.00	99.862	100.138	B1/BB-	27.6 bps	83.9 bps
Martin Midstream Partners	Energy	Bond	2/15/2028	11.500%	104.130	\$1,000.00	103.746	104.989	Caa1/B+	119.8 bps	212.2 bps
Range Resources	Energy	Bond	2/15/2030	4.750%	91.796	\$3,000.00	92.938	92.585	Ba3/BB	(38.0) bps	4.6 bps
Vital Energy	Energy	Bond	1/15/2028	10.125%	101.451	\$3,500.00	104.777	104.998	B2/B	21.1 bps	101.6 bps
HealthEquity	Healthcare	Bond	10/1/2029	4.500%	98.857	\$3,706.91	92.175	92.198	B2/B+	2.5 bps	43.2 bps
Pediatric Medical Group	Healthcare	Bond	2/15/2030	5.375%	89.820	\$4,000.00	89.798	89.592	Ba3/BB-	(22.9) bps	27.0 bps
EMBECTA Corp	Healthcare	Bond	2/15/2030	5.000%	80.523	\$4,000.00	79.846	81.288	Ba3/B+	180.6 bps	232.8 bps
ICON PLC	Healthcare	Bond	7/15/2026	2.875%	91.956	\$1,000.00	92.660	92.909	Baa3/BBB-	26.9 bps	52.8 bps
ModivCare	Healthcare	Bond	10/1/2029	5.000%	72.523	\$6,500.09	73.756	72.390	Caa1/B-	(185.2) bps	(128.7) bps
Tutor Perini	Industrials	Bond	5/1/2025	6.875%	96.232	\$2,000.00	99.626	99.294	Caa1/CCC	(33.3) bps	24.2 bps
Enpro Industries	Industrials	Bond	10/15/2026	5.750%	95.656	\$3,000.00	99.273	100.001	B2/BB	73.3 bps	121.6 bps
DXP Enterprises	Industrials	Loan	10/7/2030	10.179%	100.313	\$5,000.00	99.875	100.000	B2/B	12.5 bps	96.7 bps
Danaos Corp	Industrials	Bond	3/1/2028	8.500%	110.708	\$7,000.00	102.704	102.014	Ba3/BB+	(67.2) bps	1.8 bps
Digi International	IT	Loan	12/22/2028	10.329%	98.500	\$5,153.90	100.625	100.875	WR/NR	24.8 bps	98.5 bps
Consensus Cloud Solution	IT	Bond	10/15/2028	6.500%	89.060	\$4,994.00	91.159	88.941	B2/B+	(243.3) bps	(183.9) bps
ON Semiconductor	IT	Bond	9/1/2028	3.875%	87.777	\$5,000.00	91.650	91.798	Ba2/BB	16.1 bps	51.3 bps
Playtika	IT	Loan	3/13/2028	8.079%	99.625	\$4,000.00	99.875	100.125	Ba2/BB+	25.0 bps	91.7 bps
Ultra Clean	IT	Loan	8/27/2025	9.193%	100.500	\$3,662.54	100.125	100.000	B1/B+	(12.5) bps	63.6 bps
Carpenter Technology	Materials	Bond	7/15/2028	6.375%	96.616	\$5,000.00	99.638	99.695	B1/BB	5.7 bps	59.0 bps
Cleveland Cliffs	Materials	Bond	3/1/2029	4.625%	89.005	\$3,000.00	92.349	93.126	Ba3/NR	84.1 bps	125.8 bps
U.S. Steel	Materials	Bond	3/1/2029	6.875%	104.281	\$2,000.00	101.337	100.662	B1 *BB-	(66.6) bps	(10.1) bps
Tronox	Materials	Loan	3/13/2028	7.943%	99.375	\$4,000.00	99.625	99.875	Ba2/BB	25.1 bps	90.4 bps
AMC Entertainment	M&C	Bond	11/1/2027	12.750%	100.940	\$3,000.00	102.332	101.094	B3/B	(121.0) bps	(17.2) bps
Magnite	M&C	Loan	2/6/2031	9.829%	98.810	\$5,000.00	98.625	100.000	Ba3/BB-	139.4 bps	222.4 bps
Ciena	M&C	Loan	10/24/2030	7.429%	100.375	\$4,000.00	100.250	100.125	Baa3/BB+	(12.5) bps	48.8 bps
Virtu Financial	REGAL-FIG	Loan	1/16/2029	8.429%	99.750	\$2,148.85	99.875	99.750	Ba3/B+	(12.5) bps	44.7 bps
Moneygram International	REGAL-FIG	Loan	6/3/2030	10.829%	94.000	\$1,453.94	98.375	98.875	B2/B	50.8 bps	142.6 bps
Century Casinos	REGAL-FIG	Loan	4/2/2029	11.429%	97.125	\$2,000.16	98.125	98.000	B3/B	(12.7) bps	84.4 bps

## SECTOR ANALYSIS

Sector Analysis	Loans	LSTA 100 <sup>3</sup>	Relative	Bonds	LLC HY <sup>3</sup>	Relative
Consumer & Retail	0.76%	0.50%	0.26%	1.33%	1.29%	0.04%
Energy	-	0.49%	-	0.79%	1.26%	-0.47%
Healthcare	-	0.44%	-	0.23%	1.14%	-0.92%
Industrials	0.97%	0.52%	0.45%	0.38%	1.35%	-0.97%
IT	0.87%	0.52%	0.34%	-0.63%	1.35%	-1.98%
Materials	0.90%	0.52%	0.38%	0.66%	1.34%	-0.68%
Media & Communications	1.46%	0.08%	1.38%	-0.17%	0.21%	-0.38%
REGAL-FIG	0.85%	0.51%	0.34%	-	1.32%	-
<b>Total</b>	<b>0.97%</b>	<b>0.46%</b>	<b>0.51%</b>	<b>0.34%</b>	<b>1.20%</b>	<b>-0.86%</b>

## Loan Statistics <sup>4</sup>

	Loans Weight
WA YTM	8.96%
WA Coupon	9.04%
WA Net Return	7.77%
<b>Bond Statistics</b>	<b>Bonds Weight</b>
WA YTM	7.91%
WA Coupon	6.23%
WA Duration	3.221
WA Net Return	6.85%

## PORTFOLIO OVERVIEW

### LLC Portfolio (beginning 1/1/2018)

Beginning Portfolio Value	\$124,854.79
Current Portfolio Value	<b>\$115,802.95</b>
Cash Balance	\$71,875.34

### LLC Portfolio (YTD)

Beginning Portfolio Value	\$115,759.48
Current Portfolio Value	<b>\$115,802.95</b>
Cash Balance	\$71,875.34
Accumulated Interest	\$9,656.24

## RELATIVE PERFORMANCE

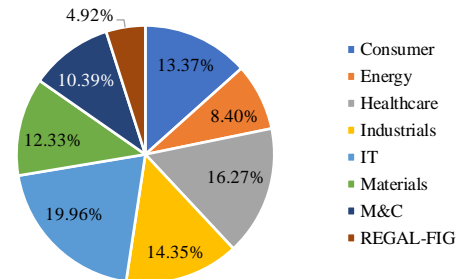
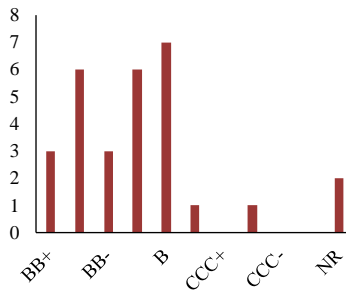
### March 2024 Performance

Leveraged Lion Capital	0.59%
LSTA 100 Index	0.46%
LLC vs. LSTA 100	0.51%
LLC HY	1.20%
LLC vs. LLC HY	<b>-0.86%</b>

### YTD Performance

Leveraged Lion Capital	1.93%
LSTA 100 Index	1.81%
LLC vs. LSTA 100	0.11%
LLC HY	1.91%
LLC vs. LLC HY	0.01%

## PORTFOLIO BREAKDOWN



## MARCH BEST PERFORMER

Sector	WA YTM
REGAL-FIG	10.33%
M&C	9.50%
IT	8.45%
C&R	7.65%
Energy	7.49%
Healthcare	7.35%
Industrials	7.35%
Materials	6.82%



## NOTES

<sup>1</sup> Opening prices for instruments added to the portfolio during the month are the price at market close on the first trading day of the month, not necessarily the buy-in price. <sup>2</sup> Most recent available ratings. <sup>3</sup> Estimates for LSTA 100 and "LLC High Yield" index individual sector performance. For the most accurate measure of Leveraged Lion Capital's relative performance, please refer to Total figures. <sup>4</sup> Net Return is based on the total return of investments since buy-in

## MARCH WORST PERFORMER



## Spring 2024 Organizational Overview

Leveraged Lion Capital is the nation's first student-run syndicated paper loan and high-yield bond portfolio. Founded in Spring 2017 at The Pennsylvania State University, the organization aims to educate undergraduate students about the world of fixed income through the utilization of various resources and unique relationships with financial organizations and institutions, including Bank of America, the LSTA, and S&P Global Market Intelligence. Managing an approximately \$125 million paper portfolio, students seek to learn the fundamentals of credit analysis via a hands-on approach by researching, analyzing, and pitching U.S. leveraged loans and high-yield bonds to the rest of the organization. The portfolio is divided into eight sectors that are derived from the S&P/LSTA 100 Index, consisting of Consumer & Retail, Energy, Healthcare, Industrials, Information Technology, Materials, Media & Communications, and REGAL-FIG (Real Estate, Gaming & Leisure, Financial Institutions Group).

Name	Position	Year	Gmail	PSU Email	Phone
<b>Executive Board</b>					
Luke Zoll	President	2025	lukezoll9@gmail.com	lqz5233@psu.edu	215-880-1390
Pearse Kelly	Vice President	2025	pearsek20@gmail.com	pjk5630@psu.edu	484-431-6140
Peyton Brezski	Chief Investment Officer	2025	pbrezfin@gmail.com	ptb5266@psu.edu	484-945-3228
Max Aurilio	Chief Operating Officer	2025	max.aurilio@gmail.com	mqa5972@psu.edu	717-598-1682
Zander Golden	Chief Financial Officer	2025	goldenzander12@gmail.com	zgx5147@psu.edu	808-650-1032
<b>Directors</b>					
Trevor Carney	Co-Director of Research	2025	trevorcarney4@gmail.com	tfc5379@psu.edu	412-328-7432
Eshwar Tunga	Co-Director of Research	2025	eshwartungal@gmail.com	eft5192@psu.edu	631-922-9317
Charles Loose	Co-Director of Education	2026	owenloose33@gmail.com	col5489@psu.edu	717-847-5742
Will Percy	Co-Director of Education	2025	wqpercy@gmail.com	wqp5126@psu.edu	215-603-0101
Nick Patterson	Director of PSFIA	2026	nickpatterson124@gmail.com	ncp5189@psu.edu	610-306-0661
Jake Whittaker	Director of Outreach	2025	jmwhittak@gmail.com	jmw7735@psu.edu	717-808-9707
Daniel Alpert	Co-Director of Pitch Quality	2025	danny.b.alpert@gmail.com	dba5363@psu.edu	267-288-3510
John Brownstead	Co-Director of Pitch Quality	2026	brownsteadjohn@gmail.com	jrj7132@psu.edu	814-441-4713
Caleb Binford	Director of Monthly Reports	2025	21cbinford@gmail.com	cjb7034@psu.edu	570-529-2630
George Quarrantey	Director of Weekly Reports	2026	quarranteygeorge@gmail.com	gfg5008@psu.edu	862-281-5926
Ivan Sosa	Director of Philanthropy	2025	ivansosamontalvo@gmail.com	iqs5246@psu.edu	832-998-7927
Dylan Verschleiser	Director of THON	2024	dverschleiser27@gmail.com	dmv5348@psu.edu	908-872-2373
<b>Lead Analysts</b>					
Madi Hunter	Consumer & Retail	2026	madelinehunter13@gmail.com	mnh5290@psu.edu	814-769-3603
Noah Simone-Dobin	Energy	2026	noahsd26@gmail.com	nvs5803@psu.edu	610-329-1900
Jayden Golden	Healthcare	2026	golden.jayden4@gmail.com	jvg6168@psu.edu	808-476-9019
Dean Allen	Industrials	2026	drallen1123@gmail.com	dra5364@psu.edu	267-234-4151
Sid Sharma	Information Technology	2026	sharma.sid.2004@gmail.com	sms9507@psu.edu	913-601-0495
Alex Kornblatt	Materials	2026	atkorn15@gmail.com	atk5368@psu.edu	610-334-5828
Jakub Dingo	Media & Communications	2026	jakubcdingo@gmail.com	jcd5828@psu.edu	740-319-1528
Ben Petrusis	REGAL-FIG	2026	benpetrusis@gmail.com	bpp5339@psu.edu	610-235-9068
<b>Associate Analysts</b>					
Arjun Kapasia	Consumer & Retail	2026	arjunkapasia333@gmail.com	ahk5329@psu.edu	508-353-7533
Sam Kilareski	Consumer & Retail	2027	samkilareski19@gmail.com	srk5836@psu.edu	814-826-8858
Jack Condran	Energy	2026	jackcondran8@gmail.com	jmc8960@psu.edu	610-608-1875
Grace Manion	Healthcare	2026	gracemanion8@gmail.com	ggm5437@psu.edu	215-375-1691
Mike Aquilino	Healthcare	2027	michael.aquilino3@gmail.com	mfa6121@psu.edu	914-450-5459
Mckenzie Smith	Industrials	2026	kenziesmith2304@gmail.com	mbs6834@psu.edu	223-225-6836
Dimitri Rainey	Industrials	2026	raineydimitri@gmail.com	dsr5442@psu.edu	201-661-4121
Anshul Dadayyapally	Information Technology	2027	dadayyapally.anshul@gmail.com	and5771@psu.edu	484-408-8349
Shawn Wang	Information Technology	2027	shawn4wang@gmail.com	slw6239@psu.edu	267-890-9278
Luke Hamaty	Materials	2026	lukehamaty13@gmail.com	lmh6416@psu.edu	724-953-9766
Karac Webb	Materials	2027	webbkarac@gmail.com	kkw5573@psu.edu	917-355-0887
Alessia Goffo	Media & Communications	2026	alessiagoffo915@gmail.com	avg6272@psu.edu	239-248-7826
Rohan Thandassery	Media & Communications	2027	thandasseryrohan@gmail.com	rpt5400@psu.edu	469-794-8828
Lulu Douglas	REGAL-FIG	2026	lulu.douglas25@gmail.com	lrd5346@psu.edu	508-850-5041
Jake Kimmel	REGAL-FIG	2027	jkimmel568@gmail.com	jjk6739@psu.edu	267-431-8000